



Non-Contact Type

Pressure Gauge

with Electrical Contact



Patents Pending Worldwide

The EEPG-100 Non-Contact Type Electrical Contact Pressure Gauges are manufactured under the FTB-developed and Patent-Pending Technology for the core contact system of the gauge using the "non-contact" sensing system as the major device to keep the switchings more smooth, accurate, quick, and thus make the life-span longer. The major benefits and features of EEPG-100 are specified below.



Features

- Pressure gauge with non-contact sensor works best for the applications where pressure switches are necessary. Because of the benefits of a combination of a high quality pressure gauge with FTB Patent-Pending "non-contact" Technology, the EEPG-100 performs merely no tolerances for the pressures setup on EEPG-100. This is because of the integration of a non-contact sensor built inside the quality FTB pressure gauge to minimize the tolerances for both devices.
- Non-Contact Sensor built inside the quality FTB pressure gauge provides a perfect system without the concerns of the contact burning phenomenon for contact type switch.
- Quick operating and releasing time to meet the requirements for quick operations from the applications such as rubber injection machines.
- Optional stainless steel AISI 316 Bourdon Tube or Movement to enrich the life-span of the EEPG-100.

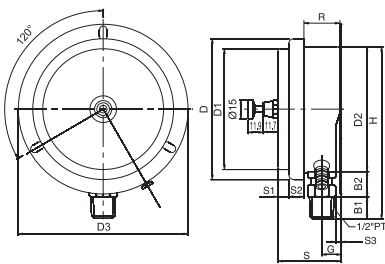
Technical Data

Contact Form:	SPST Form B
Operating Voltage:	240 VAC (Max.)
Switching Power:	50 VA
Switching Current:	0.7A DC/AC
Carrying Current:	1.5A DC/AC
Operating Time:	1.0 Millisecond
Releasing Time:	0.2 Millisecond
Operating Temperature:	-40°C to +125°C
Storage Temperature:	-50°C to +155°C

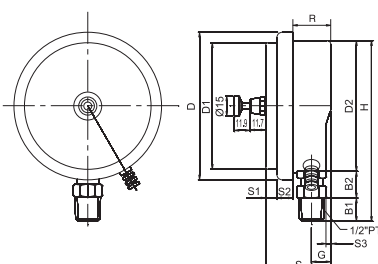
Specifications

Model:	EEPG-100 (Size 4")
Mounting:	Bottom, Back, Bottom with Back Flange Back with Front Flange
Ranges:	Positive, Negative (Vacuum), and Compound
Case:	Stainless Steel AISI 304
Lens:	Acrylic
Pointer:	Aluminum
Tubing:	Standard Brass or Optional SS 316
Movement:	Standard Brass or Optional SS 316
Connection:	Standard Brass or Optional SS 316
Wiring:	Fixed Cable Box
Contact:	High (NO), Low (NC)
Control:	Single or Double Contact(s)
Accuracy:	± 1.5% F.S.
Scale:	psi, bar, kPa, MPa, kg/cm ²

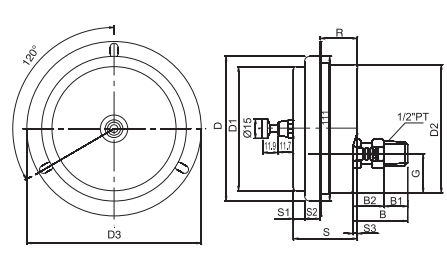
EEPG-100 Bottom with Flange



EEPG-100 Bottom



EEPG-100 Back with Flange



Model	D	D1	D2	D3	B	B1	B2	S	S1	S2	S3	R	G	H
EEPG-100 Bottom with Flange	111	95.2	98.4	133.8		18	24	49	8.5	12	3.5	28.5	14.5	136
EEPG-100 Bottom	111	95.2	98.4			18	24	49	8.5	12	3.5	28.5	14.5	136
EEPG-100 Back with Flange	111	95.2	98.4	133.8	42	18	24	49	8.5	12	3.5	28.5	30	



FTB Manufacturing Co., Ltd.

69 Dungan Road, Dali, Taichung County, Taiwan 412, R.O.C.
 Phone 886.4.2496.8658 • Fax 886.4.2496.8659
 www.ftb.com.tw • ftb@ms3.hinet.net

