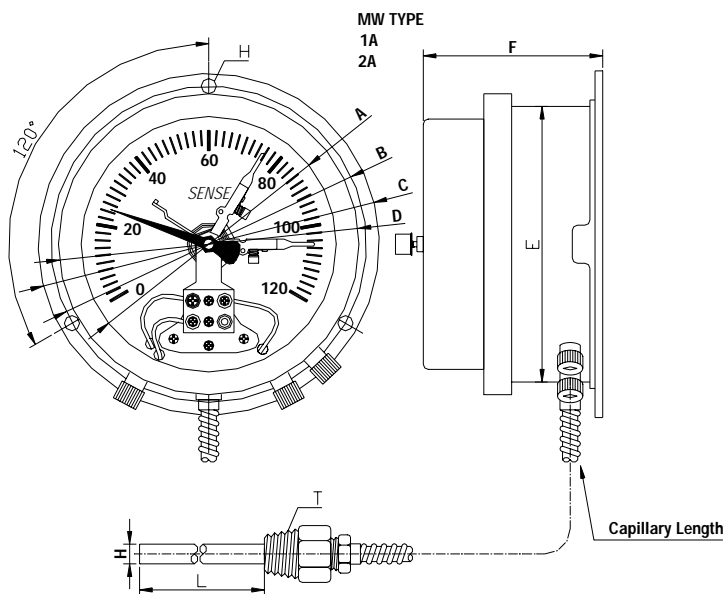




隔測壁掛式溫度計(附接點) LIQUID-FILLED THERMOMETERS MW-1A、2A型 MW-1A、2A TYPE REMOTE READING



Note:
When ordering specify
1.Type No.
2.Case Dial.
3.Temperature Range.
4.Capillary Length
5.Connection.
6.Stem Dial.
7.Stem Length.



(mm)

Type No.	A	B	C	D	E	F	H	T	L
Symbol MW 1A-2A	102	124	139	118	108	88	12	1/2"	By order

Specifications.

- 1.Case Material:304、316 s.s.
- 2.Case Dial:3" ⁰、4" ⁰、6" ⁰
- 3.Stem Material:304、316s.s.
- 4.Temperature Range:-50~600°C
- 5.Windows:Glass.
- 6.Capillary Length:STD 3M.
- 7.Connection:1/4"PT、3/8"PT、1/2" PT、3/4"PT、1"PT(NPT、BSP)
- 8.Stem Length:By order.
- 9.Accuracy:±1%F.S..
- 10.Type:MW-1A、MW-2A TYPE
- 11.Appliactions:Transformer、petrochemicals、driers、foods、air conditioning equip、boilers & other general industrial uses.