

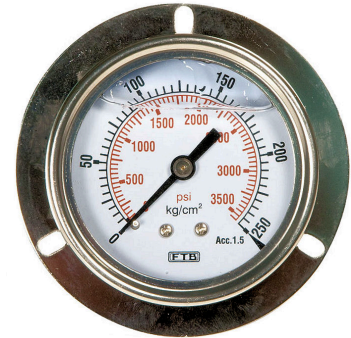
ALL STAINLESS STEEL PRESSURE GAUGES WITH LIQUID FILLED

Series: 63

Models: Crimped Bezel 323, 325

Outline

Liquid-Filled pressure gauges are constructed with case in stainless steel AISI 304 to guarantee a long and lasting life in corrosive environments. The glycerin (99.7% or silicone optional) filled is for using in applications with strong vibrations which may shorten the life span of the instrument.



325.63

Features

NOMINAL DIAMETERS (mm)

63-100

ACCURACY

1.5% of Span (F.S.)

CASE

Stainless Steel AISI 304

CONNECTION THREAD

PT/BSP(T), NPT, BSP/PF, or SAE

J1926-2 on request

BOURDON TUBE

SS AISI 316 (Germany-Imported)

MOVEMENT

Stainless Steel AISI 304

WINDOW/LENS

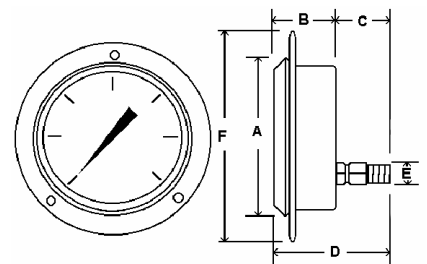
Polycarbonate (PC)

LIQUID FILLED

Pure Glycerin 99.7% or Optional

Silicone Filled

Dimensions



Crimped Ring

Technical Features

AMBIENT TEMPERATURE

+ 5 to +60°C

FLUID WORKING TEMPERATURE

Maximum +200°C

STORAGE TEMPERATURE

-10 to +70°C

PROTECTION CLASS

IP 65

Options & Accessories

Glass or Safety Glass

Chrome or Nickel-Plated Connections

Valves, Diaphragm Seals, or Other

Fitting Adaptors

DIMENSIONS	1 ½"	2"	2 ½"	4"	6"
A	N/A	N/A	2.80"/71 mm	4.32"/110 mm	N/A
B	N/A	N/A	1.28"/33 mm	1.63"/42 mm	N/A
C	N/A	N/A	1.18"/30 mm	1.14"/29 mm	N/A
D	N/A	N/A	2.46"/63 mm	2.77"/71 mm	N/A
E	N/A	N/A	¼" NPT	¼" or ½" NPT	N/A
F	N/A	N/A	3.48"/88 mm	5.20"/132 mm	N/A
G	N/A	N/A	2.50"/64 mm	3.87"/98 mm	N/A